

PACCAR EPOWERTRAIN

INTEGRATED 3-SPEED TRANSMISSION WITH CENTRAL DRIVE EMOTOR

Seamless shifts with no torque interruption
Full neutral capable for maximum efficiency

STRONG REGENERATIVE BRAKING TO REPLACE ENGINE BRAKING

eMotor regen optimized for maximizing range

EXTENDED SERVICE INTERVALS ACROSS ENTIRE DRIVELINE

Fewer moving components, fewer serviceable items

POWERTRAIN PERFORMANCE

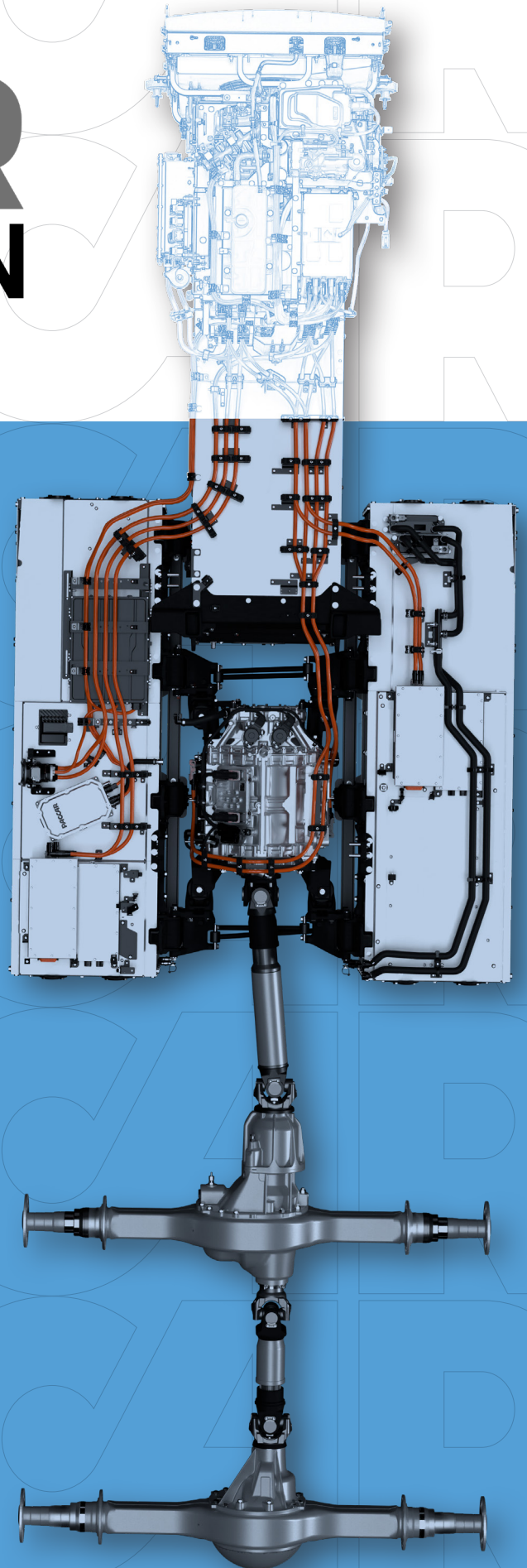
Driveline efficiency with eMotor integrated with transmission

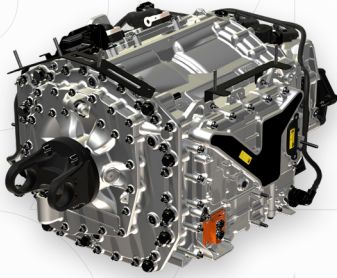
650V LITHIUM IRON PHOSPHATE (LFP) BATTERY

0-80% charge within 2 hours with 350kW charging
Retains 80% State of Health (SoH) capacity for 4,000 charge cycles
Minimal range degradation over the lifetime of the vehicle

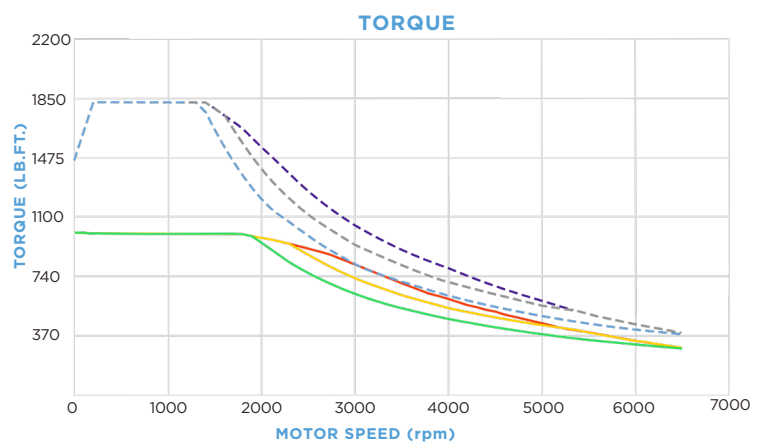
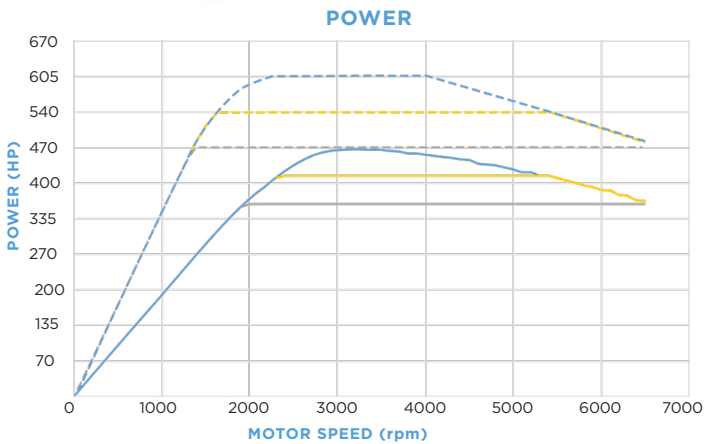
TECHNICAL SPECIFICATIONS

Configuration	6x4
GCWR	82,000LBS
Gearbox	3-speed (10.0 7.92 3.25)
System Voltage	650V





POWER (CONT./30 MIN)	POWER (PEAK/30 SEC)	TORQUE (PEAK/30 SEC)	BATTERY PACKS
365HP(270kW)	470HP(350kW)	1850 LB.-FT.	2 to 5
415HP(310kW)	540HP(400kW)	1850 LB.-FT.	3 to 5
470HP(350kW)	605HP(450kW)	1850 LB.-FT.	3 to 5

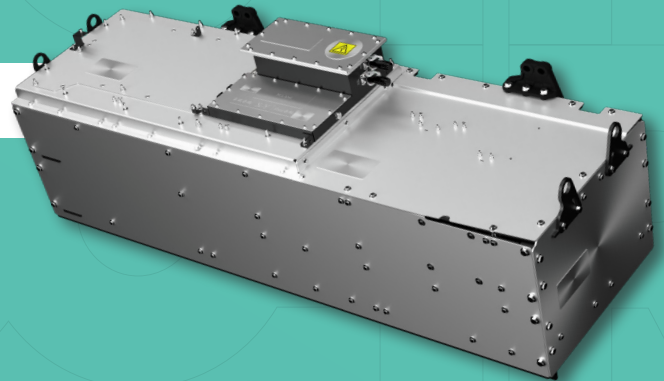


--- 470/1850 605HP Peak
— 470/1850 470HP Cont.
— 415/1850 540HP Peak
— 415/1850 415HP Cont.
--- 365/1850 470HP Peak
--- 365/1850 365HP Cont.

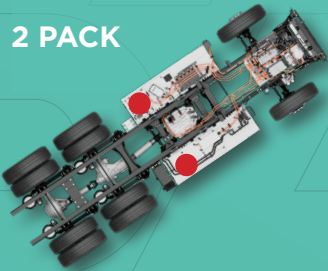
--- 470/1850 1850LB.-FT. Peak
--- 470/1850 1000LB.-FT. Cont.
--- 415/1850 1850LB.-FT. Peak
--- 415/1850 1000LB.-FT. Cont.
--- 365/1850 1850LB.-FT. Peak
--- 365/1850 1000LB.-FT. Cont.

BATTERY CONFIGURATIONS

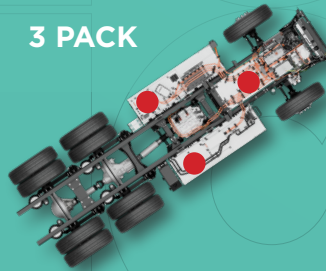
PACK CONFIGURATION	CAPACITY kWh	RANGE EST. (MI)
2 ¹	250	100
3	375	150
4	500	200
5	625	250



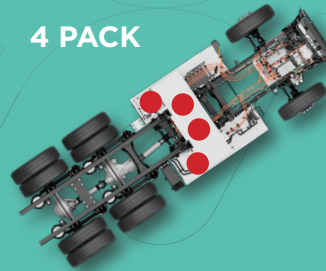
2 PACK



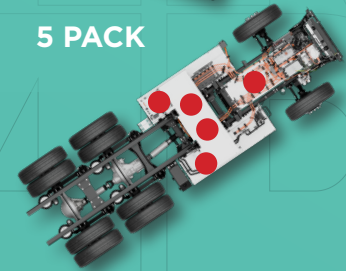
3 PACK



4 PACK



5 PACK



WARRANTY COMPONENT	WARRANTY		MONTHS	MILEAGE
	System ²	Standard		
HD Electrical Drive System ²	Standard		36	300,000MI
Battery	Standard		60	500,000MI

¹ 2 pack configuration only available with 365HP

²eMotor, eAccessories, eControls, ePowertrain Related Components

